



Uperne Road • London • SW10



A stunning and contemporary maisonette, entered through its own front door, on a quiet tree lined street. It offers generous entertaining space as well as excellent accommodation with a south westerly facing decked garden.

Uperne Road is situated just off Lots Road and King's Road and can be quickly accessed via a park at the end of the road.

Accommodation & Amenities

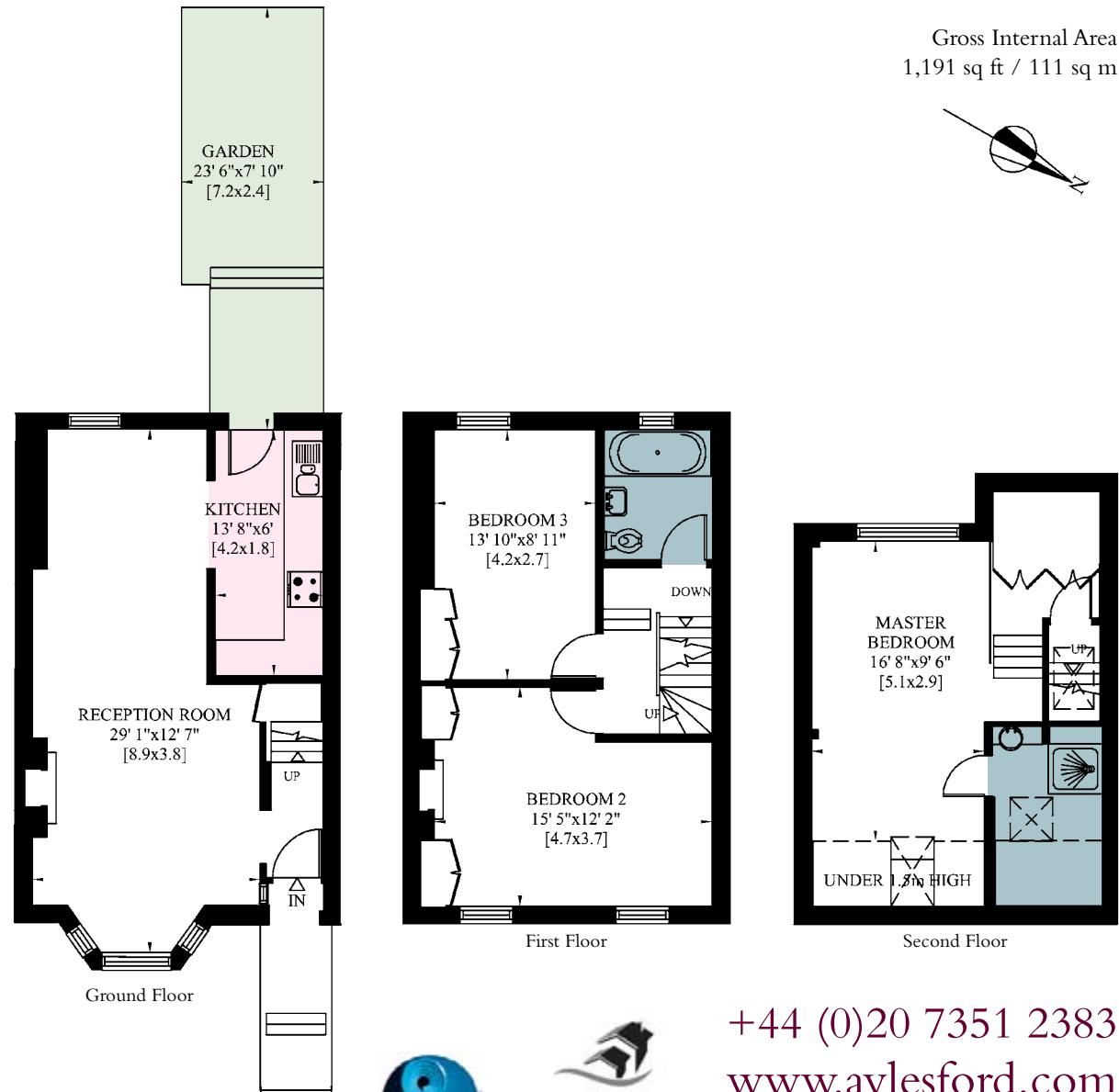
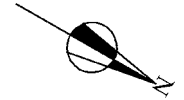
3 Double Bedrooms • Bathroom • Shower Room • Double Reception Room • Kitchen • Garden

Furnished/Unfurnished

£780 Per Week



Gross Internal Area
1,191 sq ft / 111 sq m



+44 (0)20 7351 2383
www.aylesford.com
rentals@aylesford.com