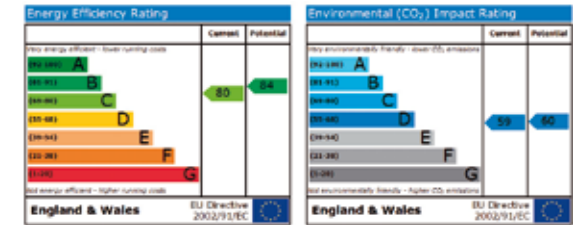




## Flat 1 • 10 Montrose Place • SW1W



GROSS INTERNAL AREA: 3,137 SQ FT  
291 SQ M

An exceptional lateral ground floor apartment (circa 3,157 sq ft) situated in one of the most pre-eminent and prestigious recent developments in Knightsbridge and Belgravia, with the benefit of 24 hour security and porter, and private underground parking.

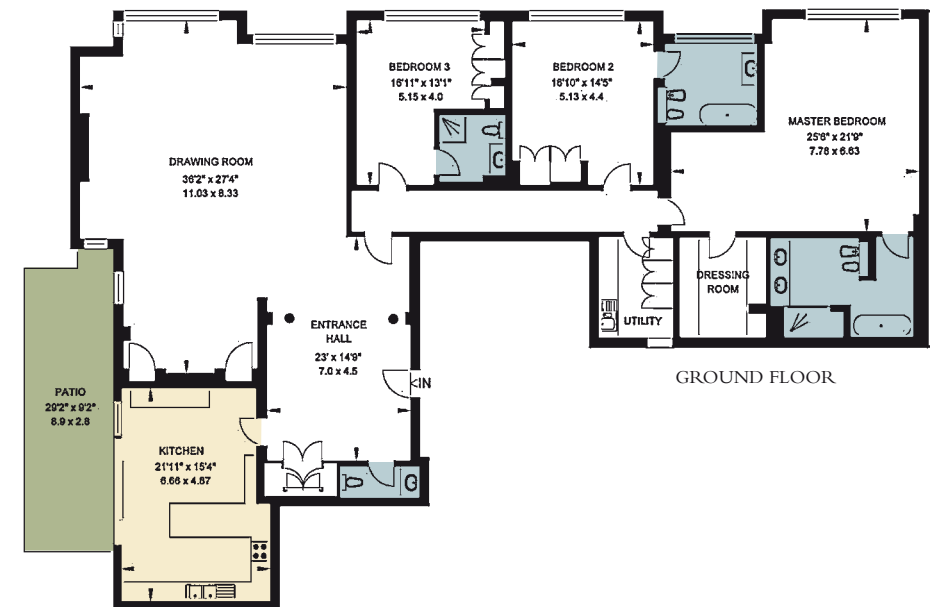
Completed in the summer of 2007, 10 Montrose Place offers fully serviced living and privacy in an exceptional location on a quiet street.

### Accommodation & Amenities

- Large Double Bedroom
- 3 Bedrooms
- 3 Bathrooms
- Kitchen
- Utility Room
- 2 Underground Parking Spaces
- Access to Communal Gardens
- Outside Space
- 24 Hour Porter

Leasehold - 124 years

Price on Application



+44 (0)20 7351 2383  
www.aylesford.com  
sales@aylesford.com